



Knowledge Bank: Year 5 Geography – Alchemy Island.

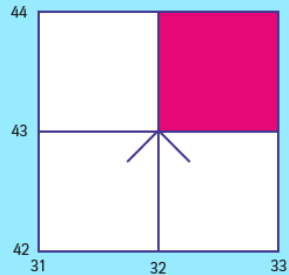
Diagrams



Points of the Compass:

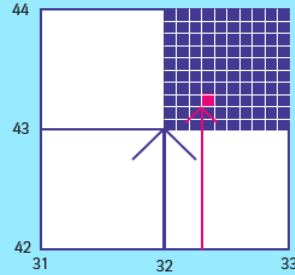
North (*Naughty*)
 East (*Elephants*)
 South (*Squirt*)
 West (*Water*)

Four Figure Grid References

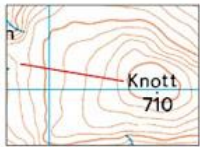


(32,43)

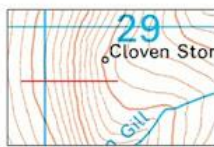
Six Figure Grid References



(324,433)



Shallow slope
Contours further apart

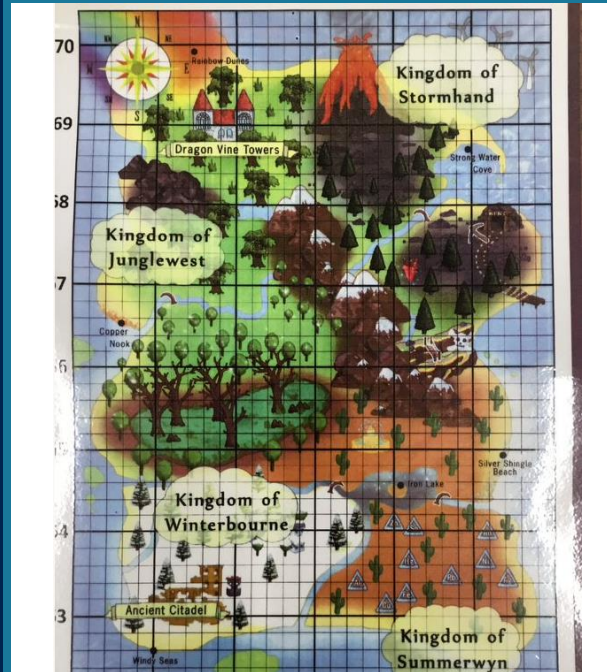


Steeper slope
Contours closer together



Steep slope
Tightly packed contours

Maps:



Key Knowledge:

Four Figure Grid References:

Using the 2 digits of the easting and the 2 digits of the northing creates a four-figure grid reference. This is the reference for the bottom left corner of a square on the map.

Six Figure grid References:

We can make our references even more precise by adding an extra number to both the easting and northing. This helps us to work out whereabouts in the square the feature you are looking for is.

8 points on a compass: North, North East, South East, East, South, South West, West, North West.

Key Vocabulary:

word	Concise definition. Ensure the word is lower case (unless it should be).
key	A guide to symbols that are used on a map.
symbol	Pictures or icons used on a map to indicate places
Eastings	Eastings are the numbers that run from left to right on the map.
Northings	Northings run from south to north.
contours	Lines on a map that show how steep hills or valleys are and the shape of hills or valleys.
coordinates	a reference number system used to locate places on a map.

What I should already know:

KS1:

- The simple compass points are, North, East, South and West.
- Basic symbols are used to represent locations on a map.
- A key is provided on a map in order to interpret the symbols that have been used

KS2:

- Where England is on a world map.
- Where Portsmouth is on a local map.
- Coordinates are used to locate places on a map